

MSL119C KEY FEATURES & TECHNICAL DATA

Ceiling mount:

Each manufactured to suit the exact ceiling height required on site.

360 degree continuous rotation:

No stops or limits for effortless and precise positioning.

Fully enclosed low voltage cables:

No exposed wires or wear points at joints.

LED Light head: User friendly design, rotates at both the light head and yoke allowing accurate positioning. 4 stage electronic dimming and switching on head.

Safety glass: High light transmission, eliminates reflections.

Removable sterilisable handle (autoclavable)

Cleaning Infection Control: Round, flat, smooth surfaces - all metal construction with powder coated and anodised finishes for durability and resistance to cleaning agents.

Ease of installation: All models supplied as a number of pre-assembled components with quick connect electrical terminals.

360 degree continuous rotation:

No stops or limits for effortless and precise positioning.

New- PATENT PENDING

MSL Support Arm: For effortless movement and drift free operation. Requires no on-going adjustment, maintenance free.

Extended upper and lower arms: Provides extended reach for full patient coverage.

Light source - compact LED module comprising 7 LEDs, driver and lens specifically designed for medical lighting tasks.

Wattage - 1 x 10W.

Dimming - 4 stage electronic dimming.

Illumination - 51,500 lux @ 600mm - 23,000 lux @ 1000mm

Light source average life - 35,000-50,000 hours.

Beam diameter - 89.7mm* @ 600mm - 133mm* @ 1000mm
(* measured at 50% of peak value).

Colour temperature - 4213°K.

Colour Rendering Index - CRI 96. In addition the LED module has a high 'Special CRI R9' value (deep saturated red, not included in normal CRI calculations). For medical examination lighting tasks this R9 value is a key issue in diagnosis and accurate tissue identification.

The MSL119C complies with the **Cyanosis Observation Index (COI)**, meeting the requirements of AS/NZS 1680.2.5:1997 for examination lighting

Cardiac protection - compliant.

Voltage - 36V DC.

EMC - compliant.

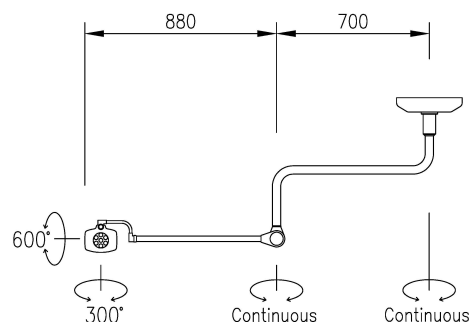
Weight - 9kg.

MSL119C NEW Features:

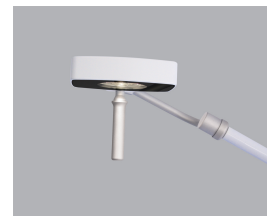
MSL's patent pending support arm provides effortless movement requiring no on-going adjustment and is maintenance free.

360 degree rotation at both the upper and lower arms is now standard.

Extended upper & lower arms for greater patient coverage.



Dimensions & range of movement



Medical & Surgical Lighting Pty Ltd
www.msllighting.com.au

Designed and Manufactured in Australia