

MSL SL316M – KEY FEATURES & TECHNICAL DATA

Safety glass: High light transmission
- eliminates reflections.

Removable sterilisable handle
(autoclavable).

LED Light source.

Light head: 'Slimline' design - sealed - user friendly, rotates at both the light head and yoke allowing accurate positioning - purpose designed heat sinking for the thermal management of the LEDs - overlapping beam pattern, minimising shadowing.

Cleaning, infection control: Round, flat, smooth surfaces - all metal construction with powder coated and anodised finishes for durability and resistance to cleaning agents.

Ease of installation: Supplied as a number of pre-assembled components - quick connect electrical terminals.

Electronic switching - 4 stage dimming.

Removable light head.

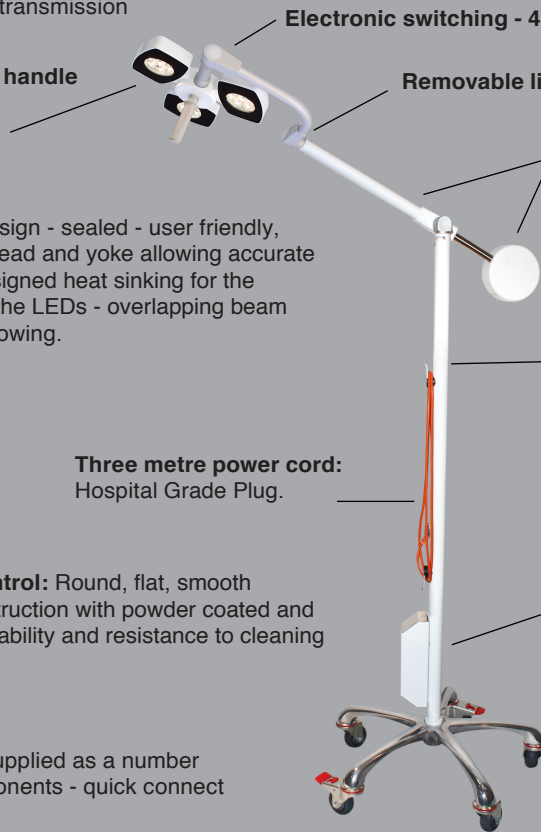
Counter balanced arm movement: Maximum vertical sweep and adjustment for full patient coverage - completely folds down for easy transport and storage - effortlessly repositionable and drift free - easy rotation and positioning of the light.

Fully enclosed low voltage cables: No wear points at joints.

Three metre power cord: Hospital Grade Plug.

Integral low voltage LED power supply.

Compact five leg base: Two opposing braked wheels for increased stability.
Standard wheels supplied are 75mm dia.



Light source – 3 x compact LED modules comprising 7 LEDs, driver and lens specifically designed for medical lighting tasks.

Wattage - 3 x 10W.

Dimming - 4 stage electronic dimming.

Illumination – 74,200 lux @ 1000mm - 83,300 lux @ 600mm

Light source average life - 35,000-50,000 hours

Beam diameter - 126mm* @ 1000mm - 144mm* @ 600mm
(* measured at 50% of peak value).

Colour temperature - 4,089°K.

Colour Rendering Index - CRI 95. In addition the LED module has a high 'Special CRI R9' value (deep saturated red, not included in normal CRI calculations). For medical examination lighting tasks this R9 value is a key issue in diagnosis and accurate tissue identification.

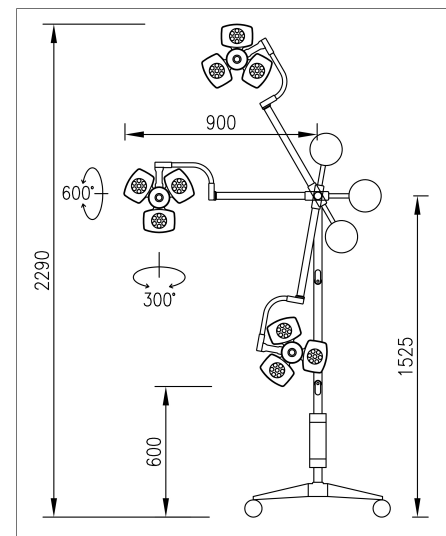
The MSL SL316W complies with the **Cyanosis Observation Index (COI)**, meeting the requirements of AS/NZS 1680.2.5:1997 for examination lighting

Cardiac protection - compliant.

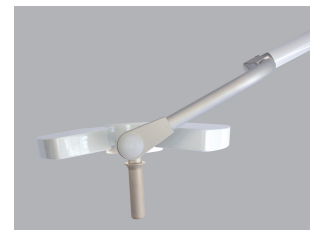
Voltage - 36V DC.

EMC – compliant.

Weight - 23kg



Dimensions & range of movement



Medical & Surgical Lighting Pty Ltd
www.msllighting.com.au

Designed and Manufactured in Australia.